

	HOUSE			SENATE		
	Democrat	Republican	Other	Democrat	Republican	Other
1898	163	185	9	26	53	11
1900	153	198	5	29	56	3
1902	178	207		32	58	
1904	136	250		32	58	
1906	164	222		29	61	
1908	172	219		32	59	
1910	228	162	1	42	49	
1912	290	127	18	51	44	1
1914	231	193	8	56	39	1
1916	210	216	9	53	42	1
1918	191	237	7	47	48	1
1920	132	300	1	37	59	
1922	207	225	3	43	51	2
1924	183	247	5	40	54	1
1926	195	237	3	47	48	1
1928	167	267	1	39	56	1
-----						
1930	220	214	1	47	48	1
1932	313	117	5	59	36	1
1934	322	103	10	69	25	2
1936	333	89	13	75	17	4
1938	262	169	4	69	23	4
1940	267	162	6	66	28	2
1942	222	209	4	57	38	1
1944	243	190	2	57	38	1
1946	188	246	1	45	51	
1948	263	171	1	54	42	
1950	234	199	2	48	47	
1952	213	221	1	47	48	1
1954	232	203		48	47	1
1956	234	201		49	47	
1958	283	154		64	34	
1960	263	174		64	36	
1962	258	176	1	67	33	
1964	295	140		68	32	
1966	248	187		64	36	
1968	243	192		58	42	
1970	255	180		55	45	
1972	243	192		57	43	
1974	291	144		61	38	
1976	292	143		62	38	
1978	277	158		59	41	
1980	243	192		47	53	
1982	269	166		46	54	
1984	253	182		47	53	
1986	258	177		55	45	
1988	259	174		55	45	
1990	267	167	1	56	44	
1992	258	176	1	57	43	
1994	204	230	1	47	53	
1996	207	227	1	45	55	
1998	211	223	1	45	55	
2000	212	221	2	50	50	
2002	205	229	1	48	51	1

2004	201	232	1	44	55	1
2006	231	204		51	49	
2008	258	177		60	40	

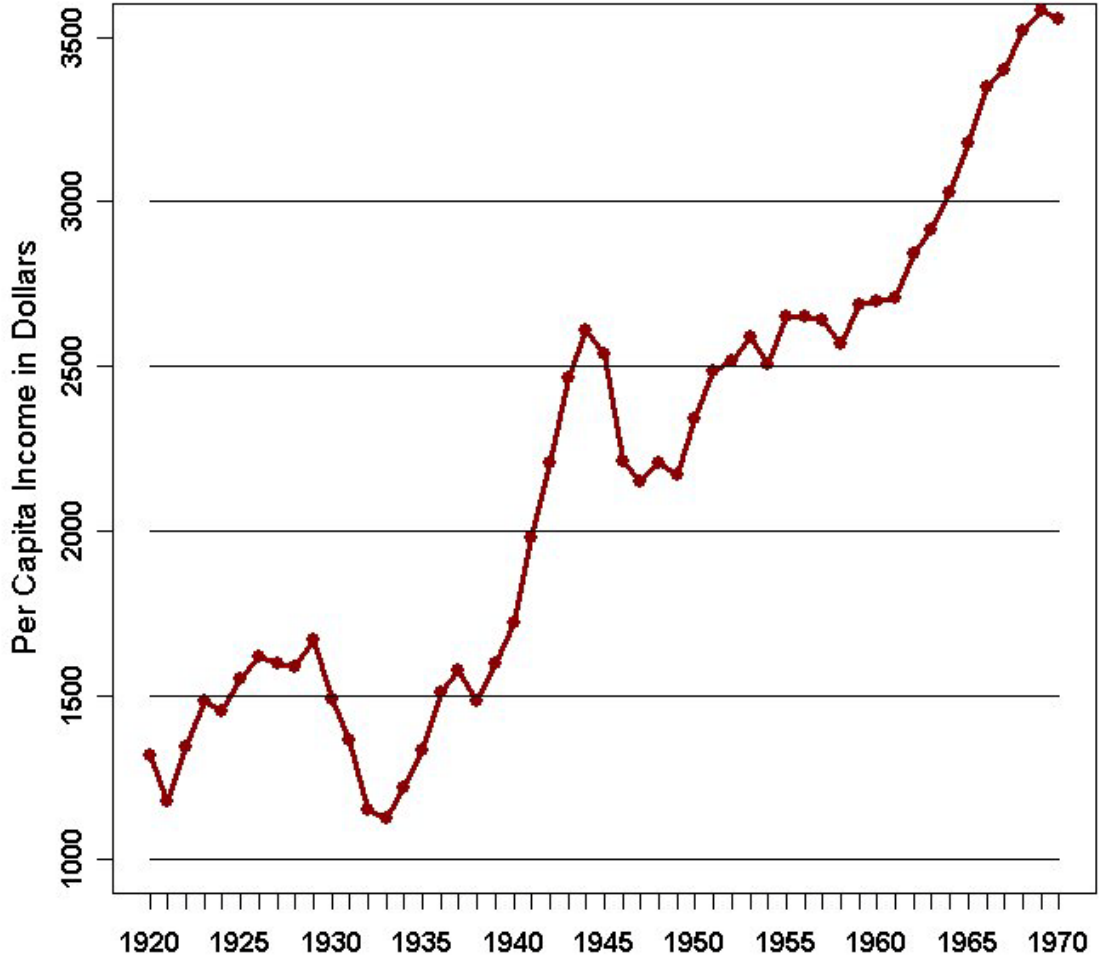
Democrat  
Republican  
Other

1900	Bryan	155	6,357,698	45.5
	McKinley	292	7,219,193	51.7
1904	Parker	140	5,083,501	37.6
	Roosevelt	336	7,625,599	56.4
1908	Bryan	162	6,406,874	43.0
	Taft	321	7,676,598	51.6
1912	Wilson	435	6,294,326	41.8
	Taft	8	3,486,343	23.2
	Roosevelt	88	4,120,207	27.4
1916	Wilson	277	9,126,063	49.2
	Hughes	254	8,547,039	46.1
1920	Cox	127	9,134,074	34.2
	Harding	404	16,151,916	60.3
1924	Davis	136	8,386,532	28.8
	Coolidge	382	15,724,310	54.0
	La Follette	13	4,827,184	16.6
1928	Smith	87	15,004,336	40.8
	Hoover	444	21,432,823	58.2
1932	Roosevelt	472	22,818,740	57.4
	Hoover	59	15,760,425	39.6
1936	Roosevelt	523	27,750,866	60.8
	Landon	8	16,679,683	36.5
1940	Roosevelt	449	27,343,218	54.7
	Willkie	82	22,334,940	44.8
1944	Roosevelt	432	25,612,610	53.4
	Dewey	99	22,021,053	45.9
1948	Truman	303	24,105,810	49.5
	Dewey	189	21,970,064	45.1
	Thurmond	39	1,169,114	2.4
1952	Stevenson	89	27,314,992	44.4
	Eisenhower	442	33,777,945	54.9
1956	Stevenson	73	26,022,752	42.0
	Eisenhower	457	35,590,472	57.4
1960	Kennedy	303	34,226,731	49.7
	Nixon	219	34,108,157	49.5
1964	Johnson	486	43,129,566	61.1
	Goldwater	52	27,178,188	38.5
1968	Humphrey	191	31,275,166	42.7
	Nixon	301	31,785,480	43.4
	Wallace	46	9,906,473	13.5
1972	McGovern	17	29,170,383	37.5
	Nixon	520	47,169,911	60.7
1976	Carter	297	40,830,763	50.1
	Ford	240	39,147,793	48.0
1980	Carter	49	35,483,883	41.0
	Reagan	489	43,904,153	50.7
	Anderson	0	5,720,060	6.6

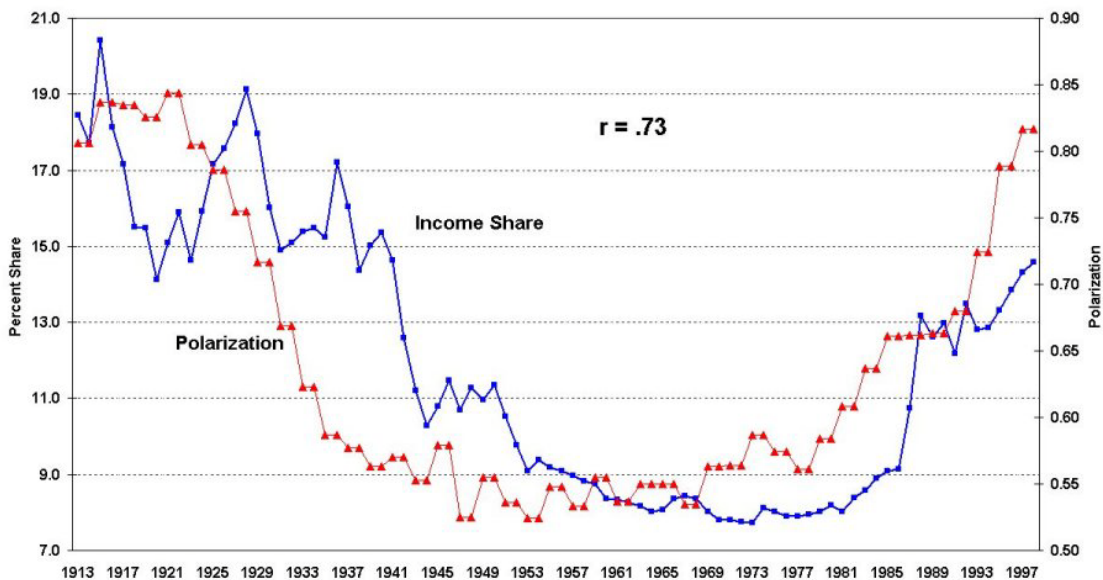
1984	Mondale	13	37,577,185	40.6
	Reagan	525	54,455,075	58.8
1988	Dukakis	111	41,809,074	45.6
	Bush,HW	426	48,886,097	53.4
1992	Clinton	370	44,909,326	43.0
	Bush,HW	168	39,103,882	37.4
	Perot	0	19,741,657	18.9
1996	Clinton	379	47,402,357	49.2
	Dole	159	39,198,755	40.7
	Perot	0	8,085,402	8.4
2000	Gore	266	50,992,335	48.4
	Bush	271	50,455,156	47.9
	Nader	0	2,882,738	2.7
2004	Kerry	251	59,026,013	48.3
	Bush	286	62,025,554	50.7
2008	Obama	365	69,456,897	52.9
	McCain	173	59,934,814	45.7

---

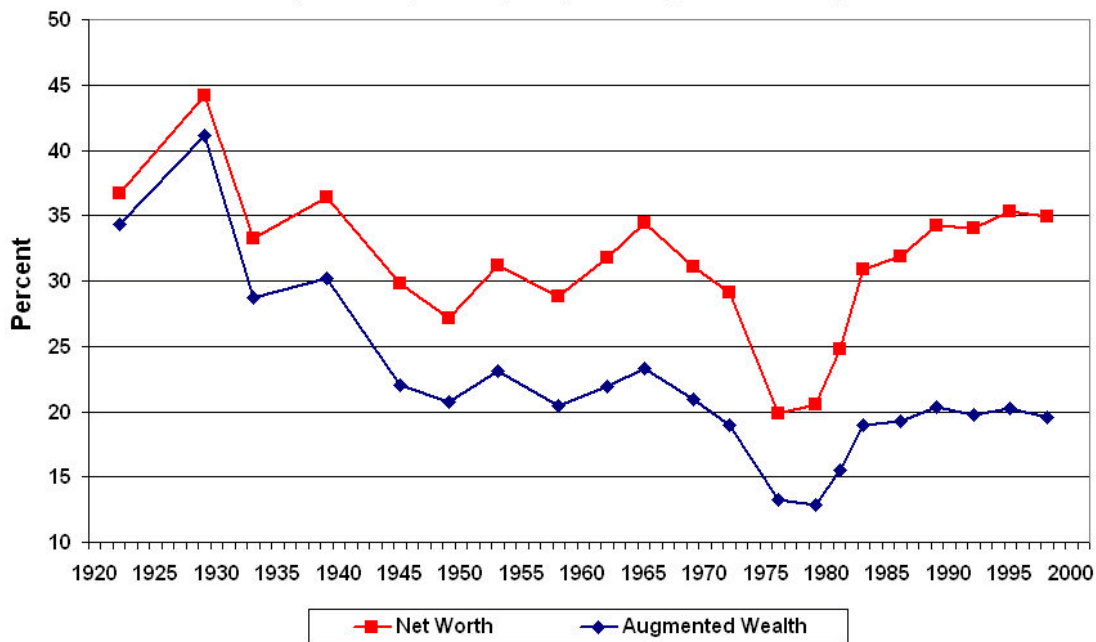
**Real Per Capita Income: 1920 - 1970  
(1958 Prices)**



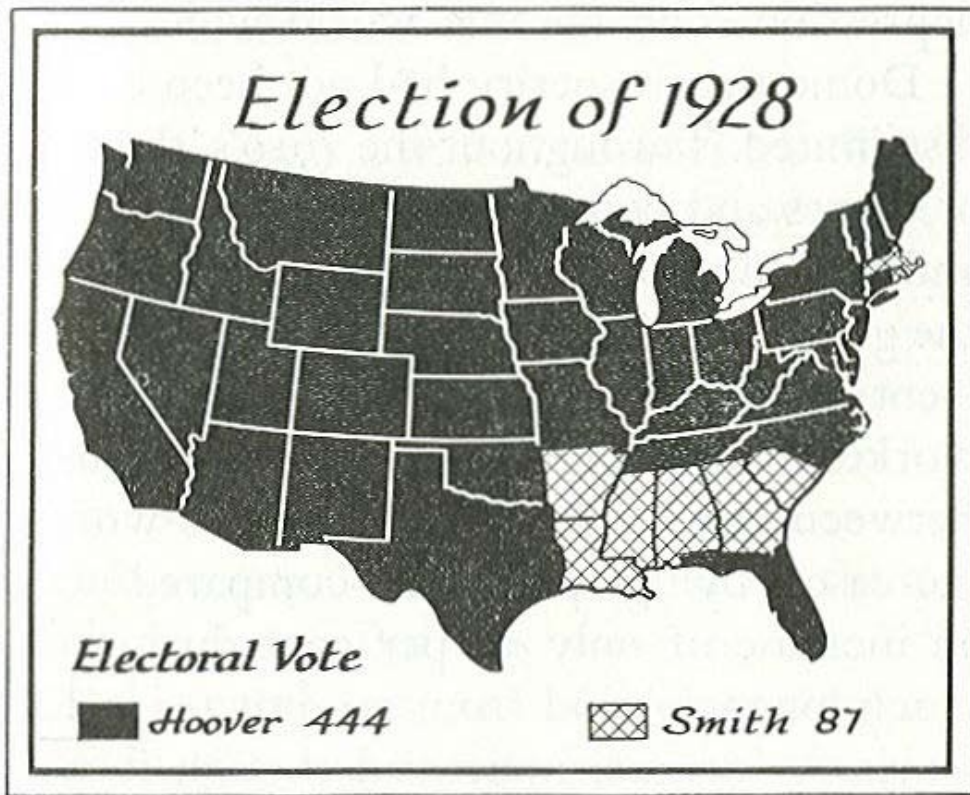
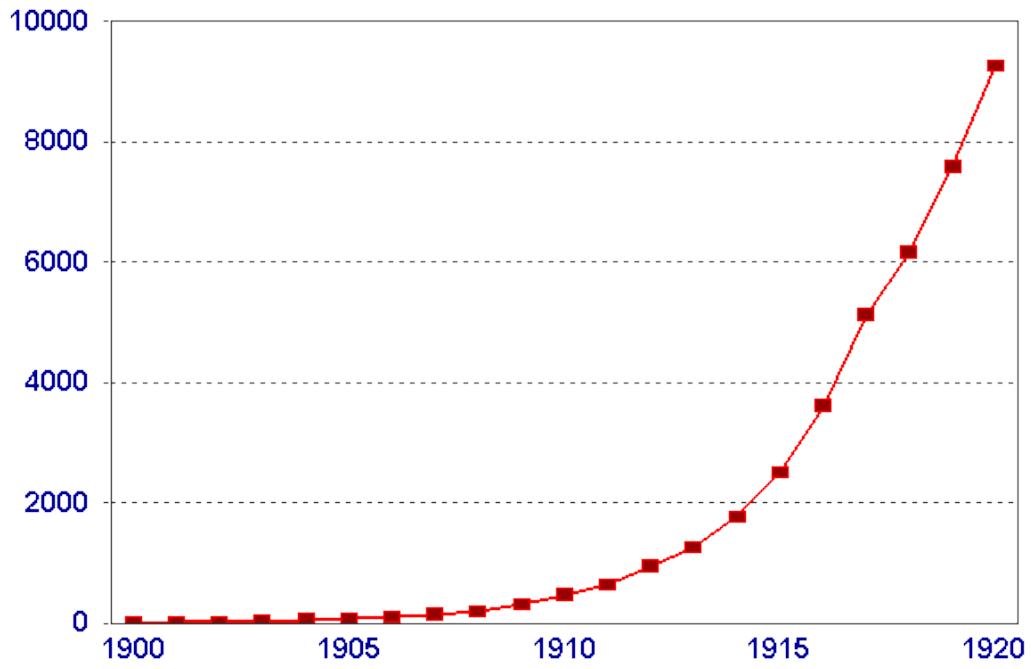
### Top 1% Income Share and House Polarization 1913 - 1998



### Net Worth and Augmented Wealth: 1922 -1998 Top 1% of Wealth Holders (Source, Wolff, Top Heavy, Table A-1)



### MOTOR-VEHICLE REGISTRATIONS (In 1,000)



John J. Raskob, Chairman Democratic National  
Committee, 1929, 1931-32.  
(12 March 1879 - 14 October 1950)



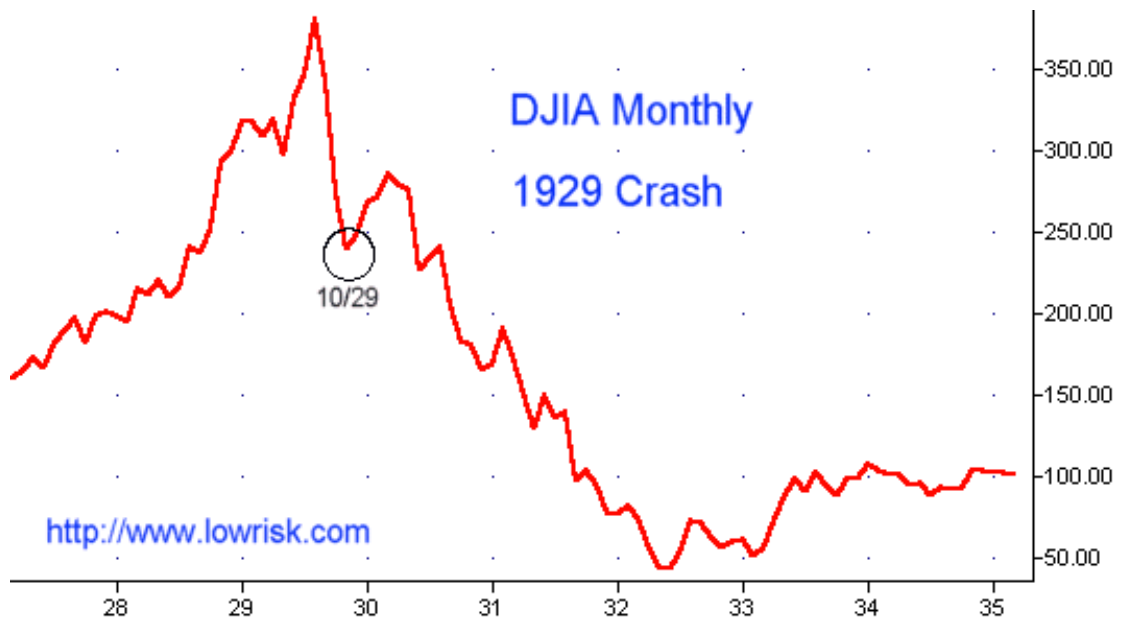
"If a man saves fifteen dollars a week, and invests in good common stocks, and allows the dividends and rights to accumulate, he will at the end of twenty years have at least \$80,000 and an income from investments of around \$400 a month. He will be rich. And because income can do that, I am firm in my belief than anyone not only can be rich but ought to be rich." (Summer, 1929)

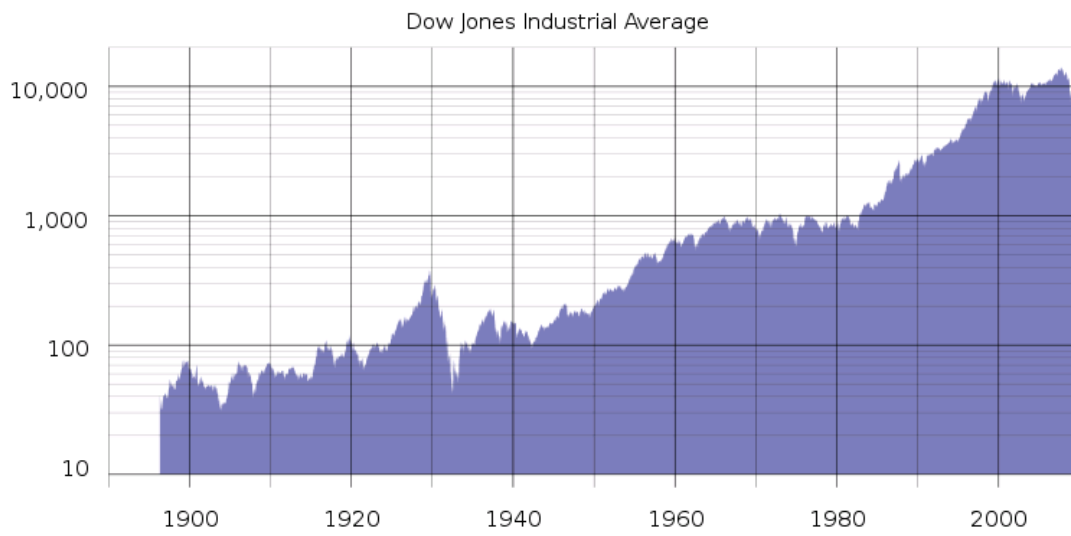
Herbert Clark Hoover  
(10 August 1874 - 20 October 1964)  
President: 4 March 1929 - 4 March 1933



"We in America are nearer to the final triumph over poverty than ever before in the history of any land ...We have not reached the goal, but given a chance to go forward with the policies of the last years, we shall soon with the help of God be in sight of the day when poverty will be banished from this nation." (Inaugural Address, 4 March 1929)

## THE STOCK MARKET CRASH OF 1929





Tariffs were long a political football:

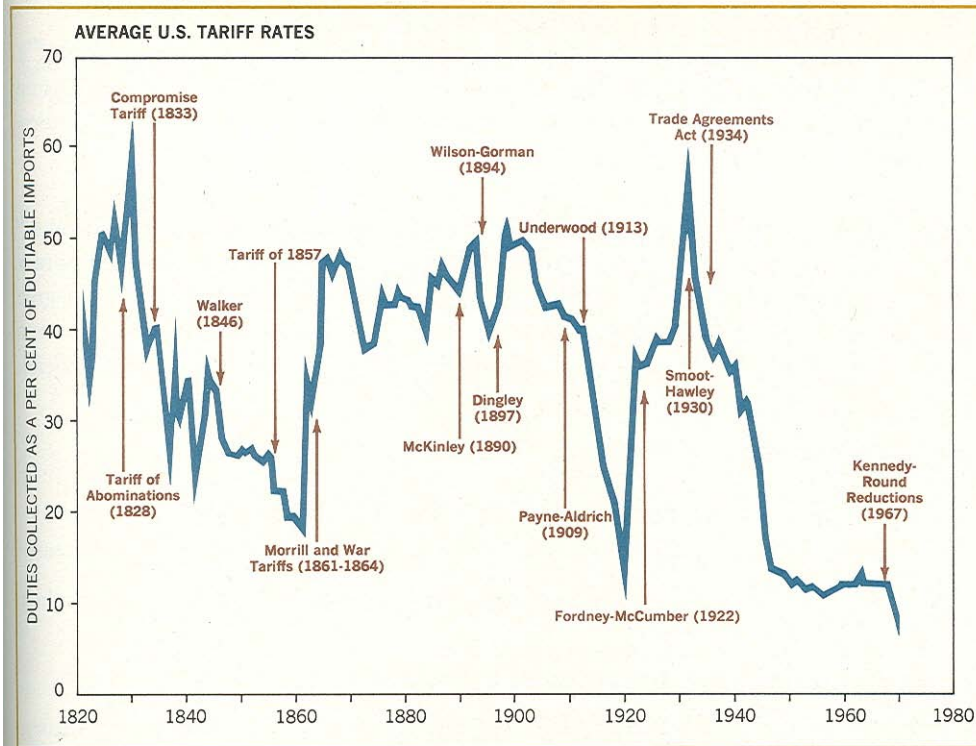


FIG. 35-1. America is no longer a high-tariff nation. Tariff rates have gone up and down in our history. Note how low they have become in the post-World War II era. If comparable figures were compiled for other countries, it would be seen that America no longer deserves her reputation as one of the most protectionist of all nations. Study of comparative quotas and exchange controls would confirm this vital change. (Source: U.S. Department of Commerce, *Statistical Abstract of the United States*, selected editions and author's estimates.)